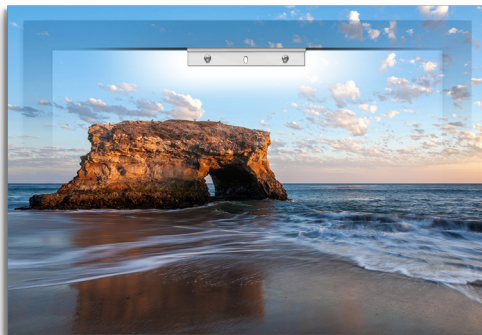


# How to Hang Your Metal Frame

Using Aluminum French Cleat Picture Hangers

## Benefits of the French Cleat

- Stable Installation
- Hangs flush to the wall
- Stays level



Matt Hoffman



### One 1" French Cleat

For Metal Frames Under 10" Wide



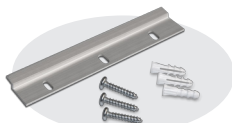
### One 6" French Cleat

For Metal Frames From 10" Up to 24" Wide

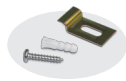


### Two 6" French Cleats

For Metal Frames Over 24" Wide



6" French Cleat Kit



1" French Cleat Kit



Optional Security Wrench & Screw

## Screw Options

Hang Metal Frame Directly on Nail or Screw in Wall (No Cleat Needed)

1 Screw (Standard)



1 Screw (Simple)



2 Screws (Standard)



3 Screws (Extra Strength)



Optional

# Inset & Flush Frame Security System

A Simple Anti-Theft Security System that will Protect Your Print

Matt Hoffman



Security Screw Location



Security Wrench



Security Screw



Use two Security Screws on Large Prints.

## Security Screw Installation



 Locked Installation



 Unlocked Installation